



Hillside School and Nursery

Monday 20th April 2020

The Hillside Hub

Dear Parent/Carer,

We would like to welcome you to the start of term 4 at Hillside School. Whilst we continue to find ourselves in very unusual circumstances, staff have worked hard to consider how best to move forward with home learning opportunities during this time of school closure. In a follow-up to the newsletter issued on the last day of term, we do hope that the information detailed here will help support communication and learning for the foreseeable future. There is no doubt that we will continue to face challenges over the coming weeks but the aim will always be to work together as a positive school community as we establish new routines and do our very best for the children and families of Hillside.

From everyone at Hillside School, we send you our best wishes and hope that you all continue to be safe and well. If you need to contact us for any reason, please feel free to do so using the Hillside email address.

Kind regards,

Jordan Leslie
Acting Head Teacher

Welcome

We would like to welcome Mrs Stephanie Bain to Hillside, who officially starts working with us today as Acting Depute Head Teacher. We will all do our best to give Stephanie a warm welcome, albeit remotely (for now).

Hillside School has been, and will continue to be, the Portlethen Cluster's School Hub during the school closure period to provide childcare for children of Key Workers. An application link was issued before the holidays and all applications for the Hub are now processed centrally.

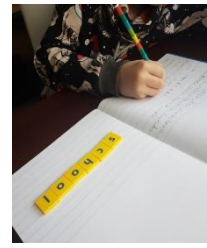
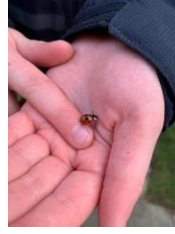
The Hub is staffed with rotational staff members from Aberdeenshire Council, which includes Hillside School staff.

Home Learning for Primary 1 -7

As of this week, we will now communicate suggested home learning opportunities through Seesaw and you should receive your child's login details by the end of today (20.04.2020). *Please note that if you have not completed our Google Questionnaire we emailed during the last week of term, you will not receive a personal login; it is essential that we receive parental permission before doing so.* Don't worry though, as soon as permission is granted, we can generate your account.

For the coming weeks we are trialling the following upload 'schedule':

Monday	<ul style="list-style-type: none">• Spelling• Grammar• Numeracy• Topic
Tuesday	Mr MacGregor (PE teacher) will upload a PE/wellbeing task/challenge
Wednesday	<ul style="list-style-type: none">• Writing• Mental Maths• Other curricular area
Thursday	Miss Morrison (Health and RME teacher) will upload a specific task/challenge
Friday	<ul style="list-style-type: none">• Topical Maths• Reading• Other curricular area



So many wonderful examples of home learning have been posted by our families @SchoolHillside1

- **This week's Monday upload will be uploaded on Tuesday.** A 'one off' to allow our families to receive their login details and for our teachers to populate their accounts and continue planning.
- The timetable has been agreed by all teaching staff and all will be uploading the same number of posts. Of course, these will vary in length and be dependent on the age and stage of your child(ren).
- *Seesaw* will be the only class resource used for home learning - Microsoft TEAMS and Google Classrooms will no longer be used during this period.
- We completely understand that each family circumstance is different. We must stress that this is an **educational offer** to provide a degree of consistency for our pupils' learning. Only our family members will know what, and how much, is right for them. We continue to promote spending this precious time together and the role of play.
- Some uploads will be differentiated for groups/pupils e.g. spelling, number and reading. However, you will only be able to see and access what has been assigned to your child(ren), or to your child(ren)'s whole class.
- **If you are looking for more home learning tasks than what we provide on *Seesaw*, please refer to the list of links we issued before the school closure and/or access our School website by selecting 'supporting learning from home' (under the 'Parents' tab).**

Communication

Seesaw will be used for the duration of the school closure as a means for teachers to assign tasks to pupils and to like/comment on any completed activities or additional posts children upload.

We kindly ask all our families to refrain from using *Seesaw* as a communication tool to ask teachers questions.

Queries and questions should be sent to the school email address where a member of the

Senior Leadership Team will either respond or make contact with the class teacher on your behalf. Our school email address is:

Hillside.Sch@aberdeenshire.gov.uk

We sincerely thank you for your understanding and cooperation.

Primary 7 Transition (Portlethen Academy)

Portlethen Academy has now launched an S1 transition tab on their website, which contains a PowerPoint with relevant information and video clips. You can access the page by clicking the following link:

<https://portlethenacademy.aberdeenshire.sch.uk/pupil-area/transition/>

Twitter

Our school Twitter account @SchoolHillside1 will continue to be used to promote wider resources, learning opportunities and celebrate wider achievement. Please do feel free to continue tweeting; we love to see what you are all up to!

Hillside Nursery

Today the Nursery launch their own Twitter account @HS_Nursery, where a daily task/challenge/idea will be posted. We do hope you can give us 'a follow' and that our nursery families can start engaging with our Early Years team.

We are also continuing to think about supports we can offer for transition this year - please stay tuned as more information will follow.

For our children who were due to join Hillside Nursery this week, rest assured, we will be in touch and hope you too can also follow us on Twitter. We look forward to giving you the real tour and a proper welcome in person when we can.

